

# TOWNS & SINGLES

FRENCHMAN'S  
BAY  
PICKERING



Artist's concept

## TOWNHOMES

- |  |                                  |  |                                 |
|--|----------------------------------|--|---------------------------------|
|  | <b>EASTPORT</b><br>1910 Sq. Ft.  |  | <b>BAYFIELD</b><br>2172 Sq. Ft. |
|  | <b>NEWPORT</b><br>2019 Sq. Ft.   |  | <b>BAYSHORE</b><br>2204 Sq. Ft. |
|  | <b>SOUTHPORT</b><br>2069 Sq. Ft. |  | <b>BAYWATER</b><br>2210 Sq. Ft. |
|  | <b>EDGEPORT</b><br>2155 Sq. Ft.  |  | <b>BAYSIDE</b><br>2215 Sq. Ft.  |

## DETACHED - 43 Ft.

- |  |                                   |
|--|-----------------------------------|
|  | <b>WHARF</b><br>2692/2720 Sq. Ft. |
|--|-----------------------------------|



**MADISON**  
GROUP

madisongroup.ca | 905.839.0038 |



FRENCHMAN'S  
BAY  
PICKERING

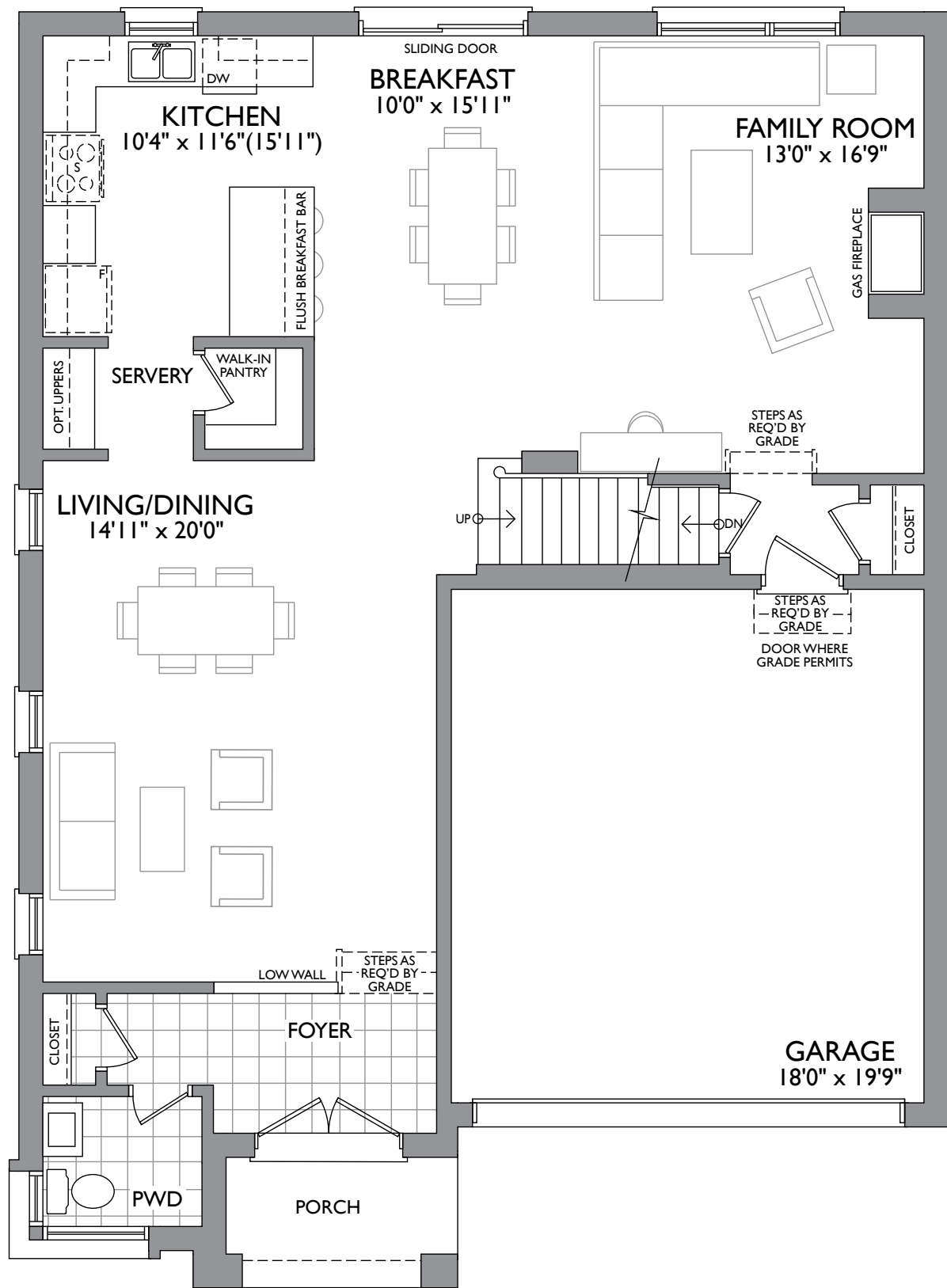


# WHARF C

AVAILABLE ON LOTS 1, 4, 7, AND 9

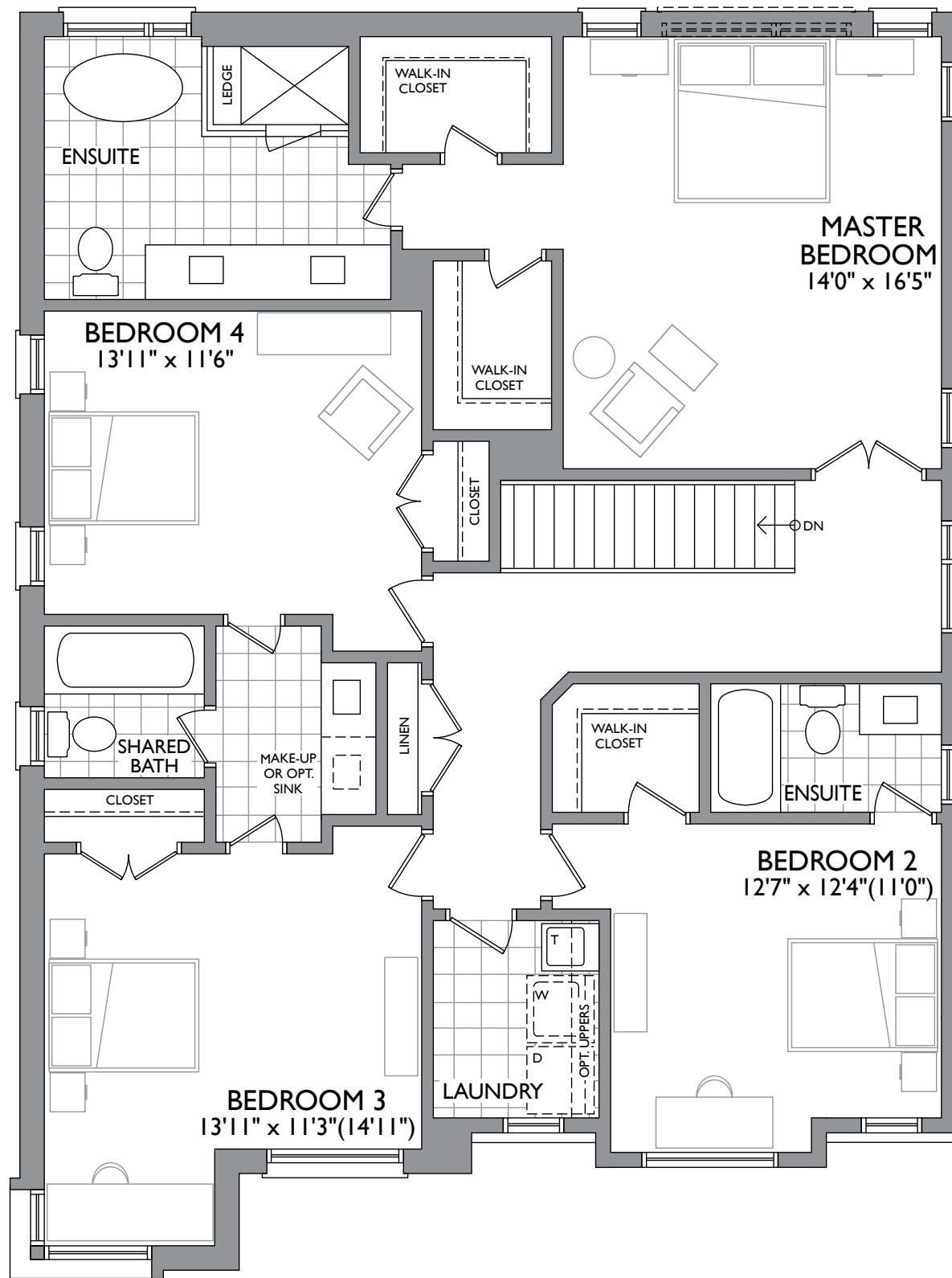
2,692 SQ. FT.

Site plan is not to scale and is artist's concept only. Site plan is subject to approval by applicable authorities and the purchaser agrees to accept any changes. Dimensions, sizes, road patterns, park and landscaping are proposed and approximate and may vary from finished community. All details are subject to change without notice. E. & O.E., June 2017.

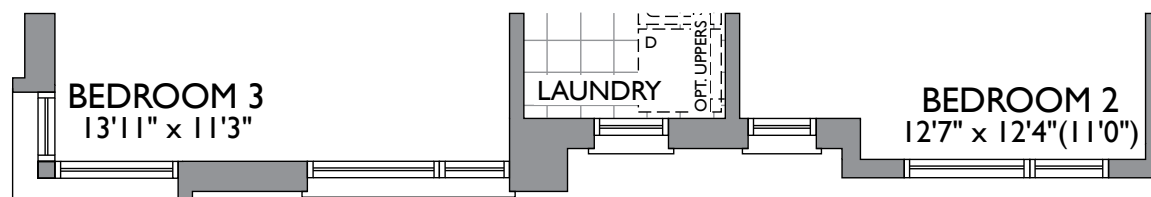


FIRST FLOOR  
ELEV. A & C

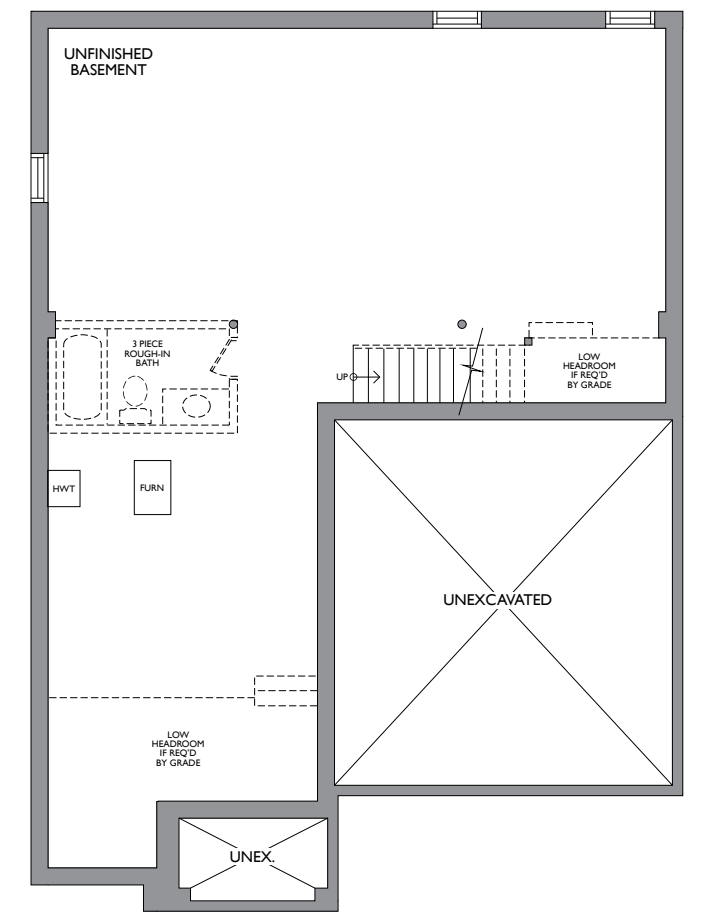
STEPS AS  
REQ'D BY  
GRADE



SECOND FLOOR  
ELEV. A



SECOND FLOOR  
ELEV. C



BASEMENT

**WHARF C**  
2,692 SQ. FT.