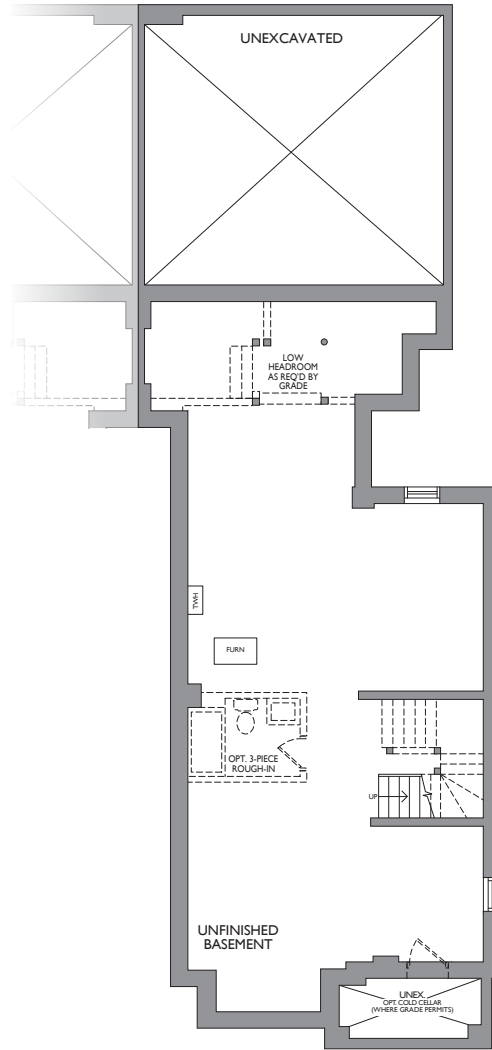


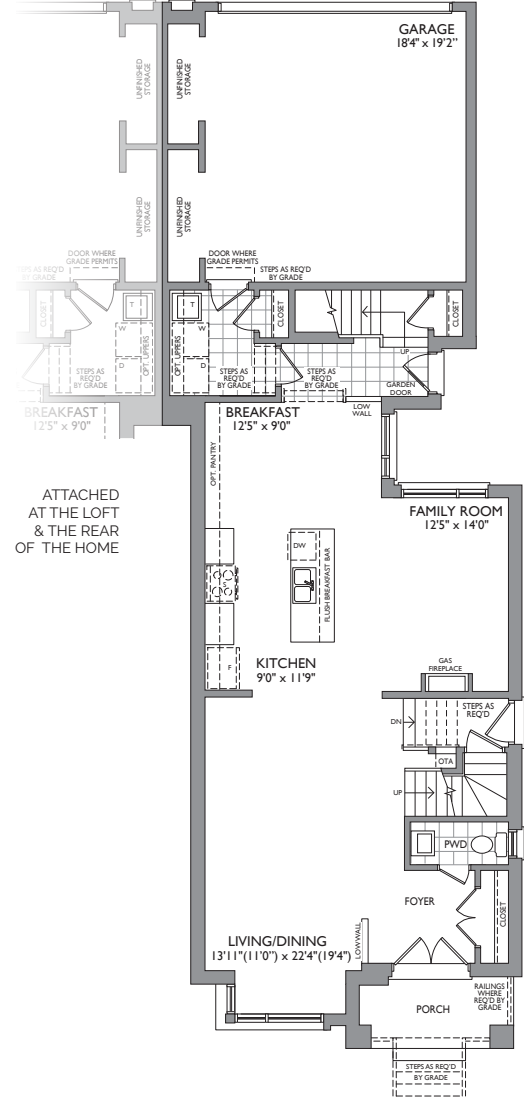


WILDBERRY I

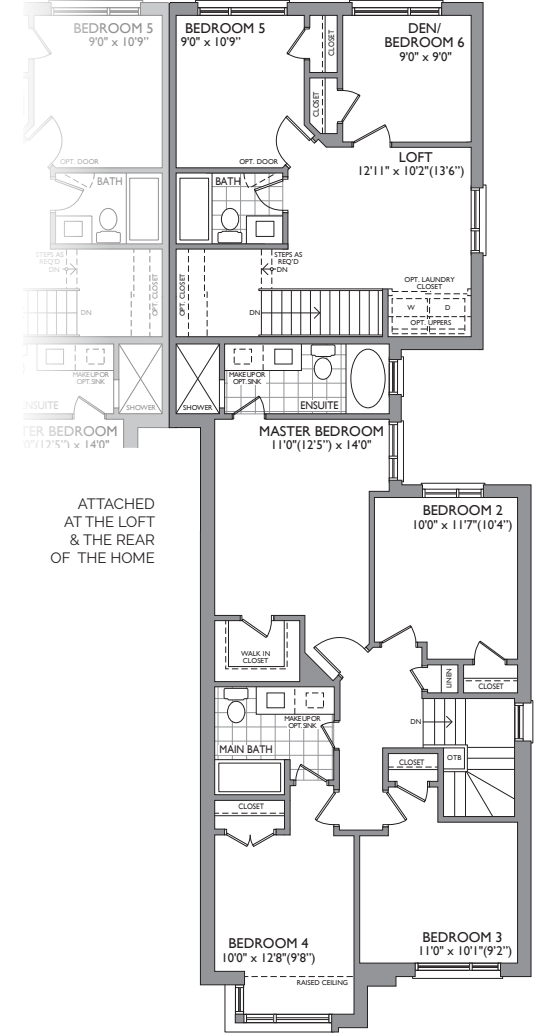
WITH LOFT
 ATTACHED AT THE LOFT & THE REAR OF THE HOME
 2,668 SQ.FT.



BASEMENT
ELEVATION A



FIRST FLOOR
ELEVATION A



SECOND FLOOR
ELEVATION A



Dimensions, materials, specifications, structural elements and floorplans are subject to change without notice. Actual usable floor space may vary from the stated floor area. Layout shown may be the reverse of the unit purchased. Exterior elevation and site plan are subject to approval by applicable authorities and the purchaser agrees to accept any change. The size and location of windows, mullions, exterior doors, furnaces, HVAC Units, patios and/or balconies are subject to change and may vary depending on unit location within the project. All illustrations are artist's concept only. E. & O. E., September 2019